



### STANDARD FEATURES

- 14,000 lb lift capacity
- 29 ft of hydraulic reach
- 4 hydraulic functions
- Hex boom with low profile jib head
- Boom-mounted planetary winch
- Wireless proportional control with digital crane load display
- Auto II Speed control

### OPTIONS

- LED boom tip light

### SPECIFICATIONS

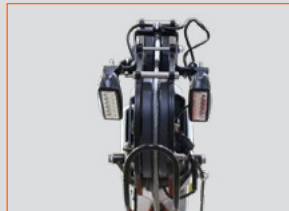
- 90,000 ft-lb crane rating
- 95,400 ft-lb max moment rating
- 26.5 ft lifting height
- 12 ft to 29 ft reach with two hydraulic boom extensions
- 45 FPM winch speed
- 1/2" x 120 ft cable
- 400° rotation with sealed turret
- 3,140 lbs operating weight
- 21" Ø mounting space required
- 46" storage height
- 164" storage length
- 33,000 lb minimum x 120 CA Chassis GVW required
- 10 GPM @ 3000 PSI open center hydraulic required
- 33 ft remote tether cord
- -11.5° boom angle



Standard wireless proportional crane and chassis control with digital crane load display.

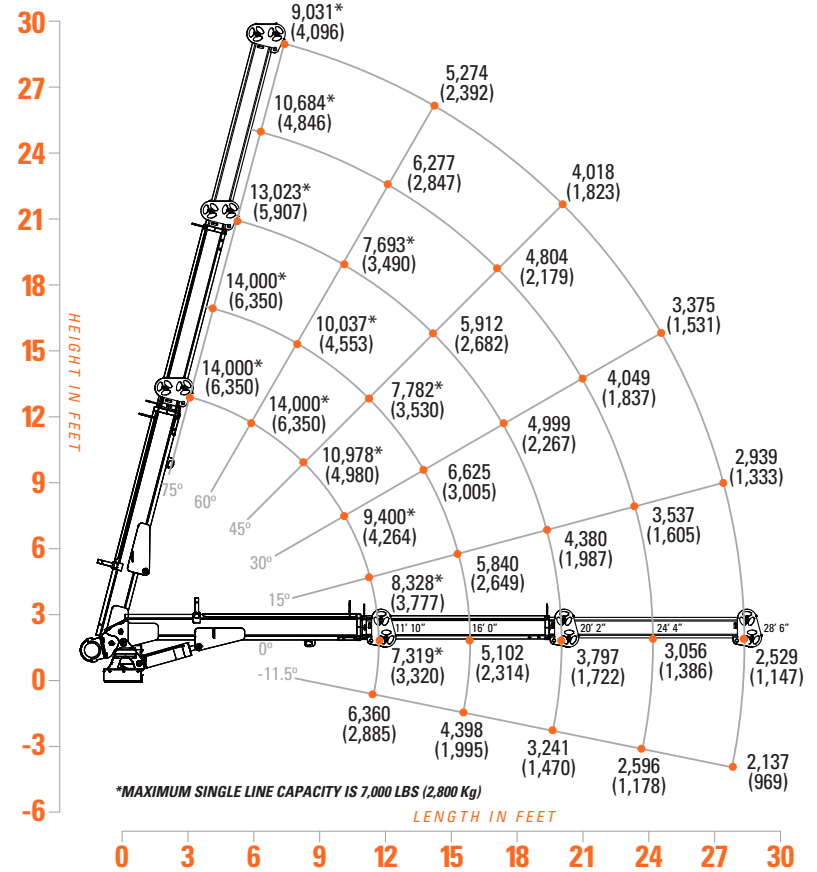


D03 Valve system provides reliable hydraulic control, indicator lights, integrated filtration, and manual overrides.



Boom tip light option adds work area lighting directly below hook. Dual LED lights with side-to-side adjustment.

### 1479 LOAD CAPACITIES



The 1479 crane is the largest Tiger Crane available. Designed for maximum loads and reach, the 1479 has 14,000 lbs of lift capacity and a 90,000-ft-lb crane rating. Whether you need big capacity or long reach, the 1479 has it all.