



#### STANDARD FEATURES

- 11,000 lb lift capacity
- 21 ft of hydraulic reach
- 4 hydraulic functions
- Hex boom with low profile jib head
- Boom-mounted planetary winch
- Wireless proportional control with digital crane load display
- Auto II Speed control

#### OPTIONS

- LED boom tip light

#### SPECIFICATIONS

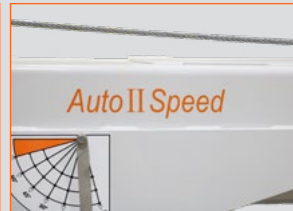
- 66,000 ft-lb crane rating
- 72,200 ft-lb max moment rating
- 18.5 ft lifting height
- 12 ft to 21 ft reach with one hydraulic boom extension
- 60 FPM winch speed
- 7/16" x 120 ft cable
- 400° rotation with sealed turret
- 2070 lbs operating weight
- 21" Ø mounting space required
- 42" storage height
- 158" storage length
- 25,500 lb min chassis GVW required
- 10 GPM @ 2775 PSI – open center hydraulic required
- 33 ft remote tether cord
- -6.5° boom angle



Standard wireless proportional crane and chassis control with digital crane load display.

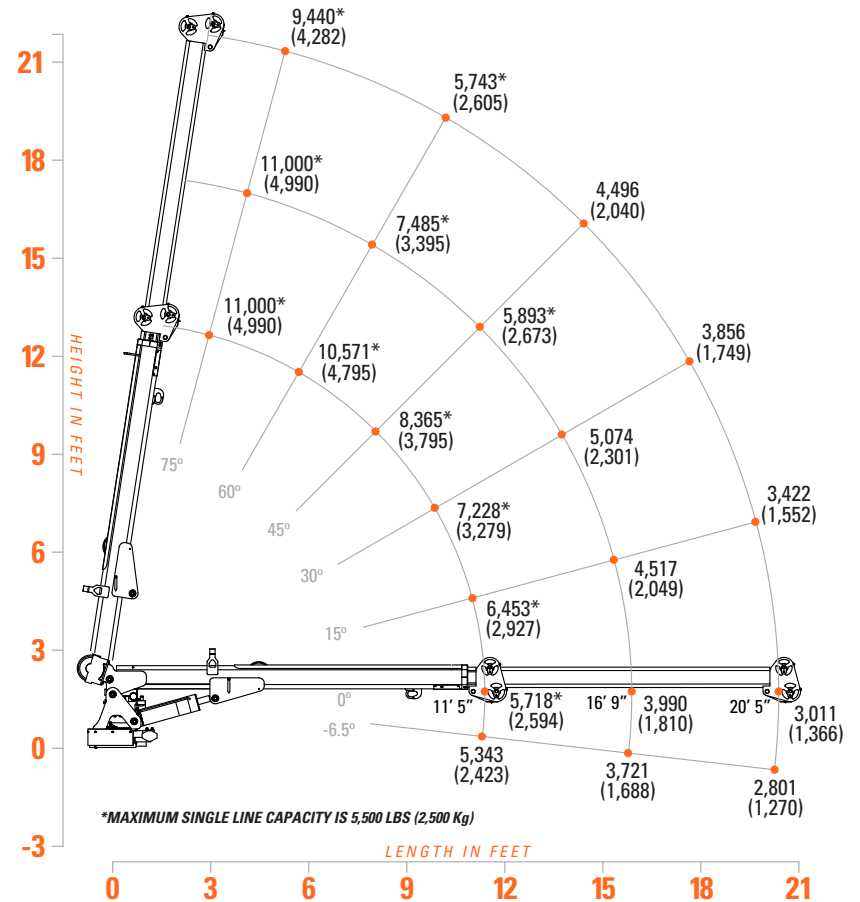


33 ft tether cord (included) allows RF-free operation or alternate power.



Auto II Speed automatically reduces the maximum working speed of all crane functions when a load is sensed.

#### 1061 LOAD CAPACITIES



The 1061 Tiger Crane is the crane for the heavy lift user that needs big capacity in a compact package. Featuring 11,000 lbs of gross lift, 21 ft of power reach, and the ability to mount on an 11 ft crane body, the 1061 is the crane for heavy duty versatility.